

\$1 Billion in CMMI Innovation Awards: Opportunities for Advancing Community Prevention and Population Health

Friday, June 14, 2013

11:30 AM to 1:00 PM Pacific

2:30 PM to 4:00 PM Eastern

Welcome and thank you for joining our Web Forum!

Technical difficulties? Call **1-866-229-3239**

Questions? Comments? Use the **Q&A** function

Please participate in the **polls**

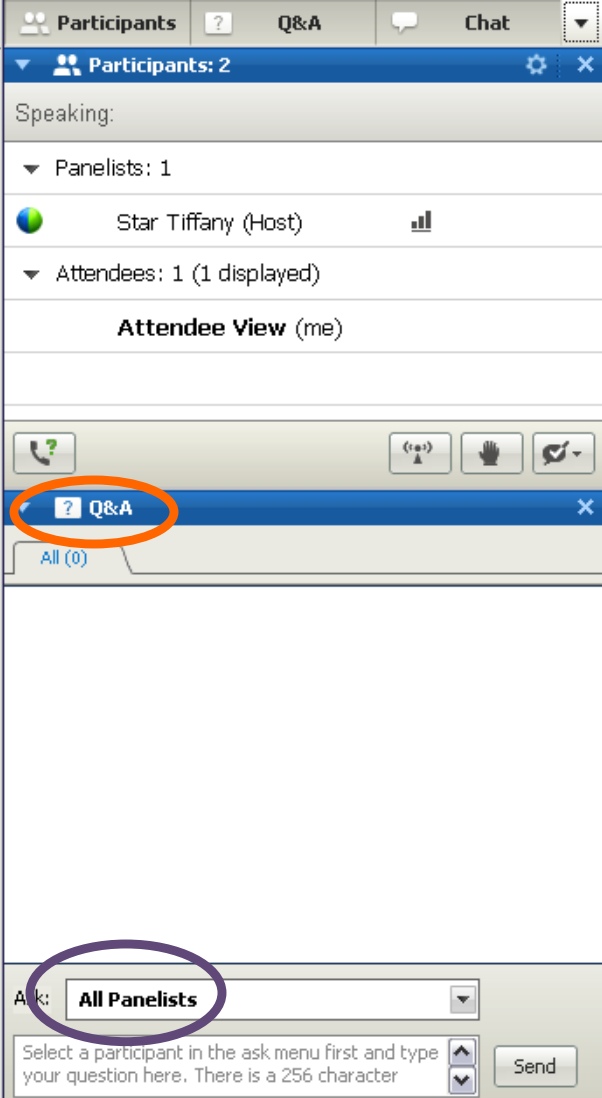
Please take the Post-Web Forum online evaluation. **We need your feedback!**

Recording and **Slides** will be available at www.Dialogue4Health.org

Q&A Feature

Please submit questions via the
Q&A Feature

Please send your questions to
All Panelists



Participants ? Q&A Chat

Participants: 2

Speaking:

Panelists: 1

Star Tiffany (Host)

Attendees: 1 (1 displayed)

Attendee View (me)

Q&A

All (0)

Ask: All Panelists

Select a participant in the ask menu first and type your question here. There is a 256 character

Send

Polling Feature

Please

1. Choose your **answer**, then
2. Click **Submit**



Partic... Chat Q&A Polling

Participants: 2

Name	Tools
Star Tiffany (Host)	
Attendees: 1 (1 displayed)	

Attendee View

Request Mute

Q&A

All (0)

Ask: All Panelists

Select a participant in the ask menu first and type your question here. There is a 256 character limit. Send

Time elapsed: 0:20 Time limit: 1:30

Poll Questions:

1. I am attending this Web Forum:

- a. Individually
- b. In a group of 2-5
- c. In a group of 6-10
- d. In a group of more than 10 people

Submit

Your answer may be recorded. Submit

POLL #1

Are you attending this Web Forum:

- a. Individually
- b. In a group of 2-5 people
- c. In a group of 6-10 people
- d. In a group of more than 10 people



Matthew Marsom

Vice President

Public Health Policy and Advocacy
Public Health Institute

As Vice President for Public Health Policy and Advocacy for the Public Health Institute (PHI), Matthew is responsible for designing and implementing PHI strategy for monitoring and influencing public policy, legislation and regulations affecting PHI projects and public health policy relevant to PHI interests.

Website: www.phi.org

Thank you to our presenters:



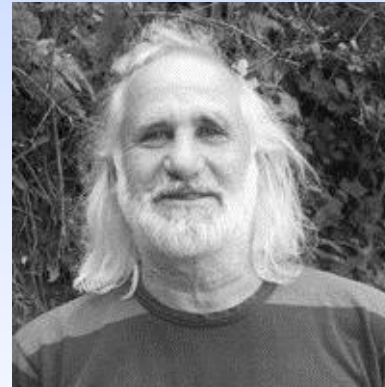
**Jim
Hester**



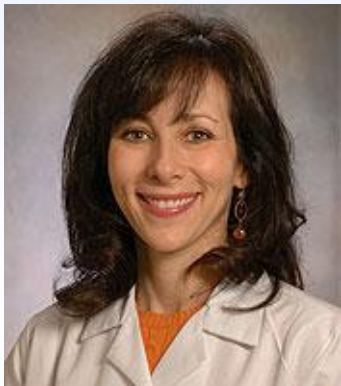
**Jeff
Levi**



**Kimberlydawn
Wisdom**



**Larry
Cohen**



**Stacy
Tessler
Lindau**



**Mary
Pittman**



Jeff Levi, PhD

Executive Director
Trust for America's Health

Jeff Levi leads Trust for America's Health's (TFAH) advocacy efforts on behalf of a modernized public health system. He oversees TFAH's work on a range of public health policy issues, including implementation of the public health provisions of the Affordable Care Act (ACA) and annual reports assessing the nation's public health preparedness, investment in public health infrastructure, and response to chronic diseases. TFAH led the public health community's efforts to enact, and now defend, the prevention provisions of the ACA, including the Prevention and Public Health Fund and the new Community Transformation Grants. In January 2011, President Obama appointed Dr. Levi to serve as a member of the Advisory Group on Prevention, Health Promotion, and Integrative and Public Health.

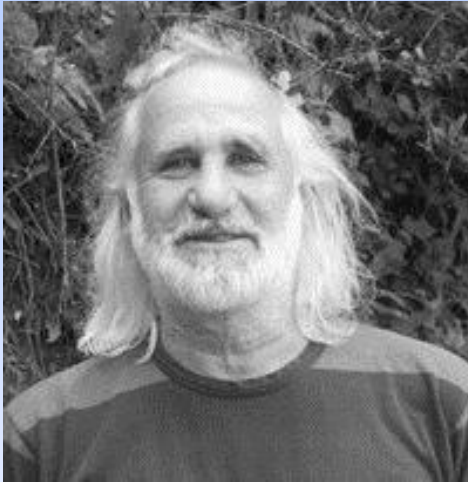
Website: <http://healthyamericans.org>



Jim Hester, PhD

Former Director
Population Health Models Group
Center for Medicare and Medicaid Innovation

James A. Hester, Ph.D. has been active in health reform and population health for almost four decades. His most recent position was the Acting Director of the Population Health Models Group at the Innovation Center in CMS assisting in the development of delivery system transformation and payment reform initiatives. Dr. Hester has held senior management positions with MVP Healthcare, ChoiceCare, Pilgrim Health Care, and Tufts Medical Center. He began his managed care career as Director of Applied Research for the Kaiser Permanente Medical Care Program in Los Angeles, California. Dr. Hester earned his Ph.D. in urban studies, and his M.S. and B.S. degrees in Aeronautics and Astronautics, all from the Massachusetts Institute of Technology.

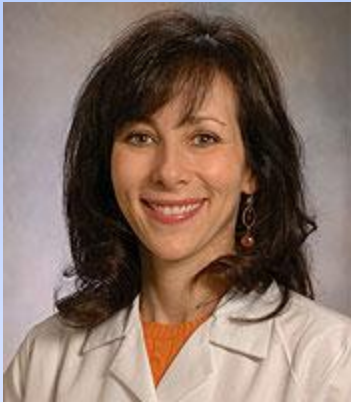


Larry Cohen, MSW

Executive Director
Prevention Institute

Larry Cohen, MSW, is the Executive Director and founder of Prevention Institute. Prevention Institute is a national non-profit dedicated to creating systematic, comprehensive strategies that change the conditions that impact community health. An important focus of Mr. Cohen's work has been to develop local policies that support health and wellness and spur legislation at the state and federal levels.

Website: www.preventioninstitute.org



Stacy Tessler Lindau, MD, MAPP

Associate Professor

Obstetrics/Gynecology and Medicine-Geriatrics
The University of Chicago Medicine

Stacy Tessler Lindau, MD, MAPP, focuses on patient care, research, education and advocacy related to the health of aging women and urban populations. Dr. Lindau is the director of the South Side Health and Vitality Studies (SSHVS) at the University of Chicago Urban Health Initiative, which work to create and spread knowledge that people and communities can use to sustain excellent health and vitality. In addition to the study of urban population health improvement and fairness in health care, her laboratory focuses on female aging and sexuality.

Website: www.sshvs.org



Kimberlydawn Wisdom, MD, MS

Member of the Board of Directors

Public Health Institute

Senior Vice President of Community Health & Equity
and Chief Wellness Officer

Gail and Lois Warden Endowed Chair on Multicultural Health
Henry Ford Health System

Michigan's First Surgeon General

The Honorable Dr. Kimberlydawn Wisdom is a board-certified Emergency Medicine Physician who practiced for 20 years at Henry Ford Health System (HFHS) in Detroit, Michigan. In 2007, Dr. Wisdom returned to the Institute of Multicultural Health at HFHS, which she founded and directed, as Vice President of Community Health Education and Wellness while retaining her post as Surgeon General. In March 2011, Dr. Wisdom was promoted to Senior Vice President of Community Health & Equity and Chief Wellness Officer and also stepped down as State Surgeon after having served for 8 years. She continues to develop and lead efforts that improve the health of the community, focused on physical inactivity, unhealthy eating habits, childhood lead poisoning, tobacco use, chronic disease, infant mortality, unintended pregnancy, and health disparities, among other areas of concern.

Website: www.henryford.com



Mary Pittman, DrPH

President & CEO
Public Health Institute

Mary Pittman, President and CEO of the Public Health Institute, is known nationally for leadership in improving community health, addressing health inequities in vulnerable populations and promoting quality care. She also focuses on reducing childhood obesity and chronic disease, supporting prevention, advancing technology use for health, and advocacy to improve public health.

Website: www.phi.org

Web Forum Objectives

- Learn about opportunities for advancing community prevention and population health in Round 2 of CMMI's Health Care Innovation Awards
- Discuss key prevention opportunities in the "Models that Improve the Health of Populations" Innovation Category: new payment models that support prevention and partnerships between public health, clinical care, Medicaid, community organizations; and
- Learn from the experiences of an Awardee from Round 1 of the Health Care Innovation Awards. Provide an update regarding the Prevention and Public Health Fund.
- Open discussion and Q&A session.

POLL #2

Do you plan to apply for the CMS Health Care Innovation Awards Round Two? (Choose One)

- a. Yes, we are committed to applying.
- b. We would like to apply but need additional resources and information.
- c. Unlikely to apply at this time.
- d. No, we are unable to apply.

POLL #3

Are you currently partnering with the healthcare community (or vice versa with public health) and community-based organizations to address healthcare system transformation that will improve population health? (Choose One)

- a. No, not at all.
- b. In a limited way.
- c. Yes, extensively.
- d. Other (Please share examples of collaboration in the Q&A panel)

POLL #4

After hearing today's Web Forum, are you more likely to apply for the CMS Health Care Innovation Awards Round Two?

- a. Yes
- b. Maybe
- c. Unsure
- d. No

Take part in this conversation on the
Dialogue4Health social network:

<http://dialogue4health.ning.com/>

Thank you to our presenters:



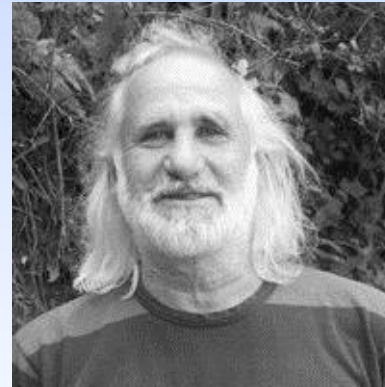
**Jim
Hester**



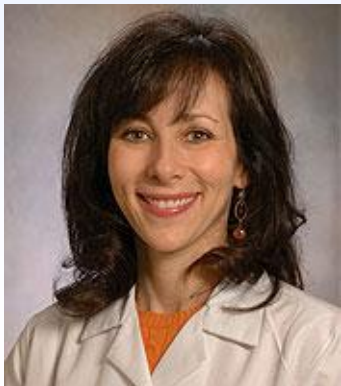
**Jeff
Levi**



**Kimberlydawn
Wisdom**



**Larry
Cohen**



**Stacy
Tessler
Lindau**



**Mary
Pittman**

Thank you to our cosponsors:

Prevention Institute
Public Health Institute
Trust for America's Health

And the Dialogue4Health Staff!



**Star
Tiffany**



**Lotta
Chan**

\$1 Billion in CMMI Innovation Awards: Opportunities for Advancing Community Prevention and Population Health

Friday, June 14, 2013

11:30 AM to 1:00 PM Pacific

2:30 PM to 4:00 PM Eastern

Thank You!

Go to www.Dialogue4Health.org