

Protecting Community Prevention and Funding for Public Health: Update and Resources for Action

Wednesday, February 15

11:30 AM to 12:30 PM Pacific Daylight Time

2:30 PM to 3:30 PM Eastern Daylight Time

Welcome and thank you for joining our Web Forum!

If you have technical difficulties call **1-866-229-3239** for assistance

Use the **Q&A** function to submit questions or any technical issues

Participate in the **polls** by selecting your answer and clicking **submit**

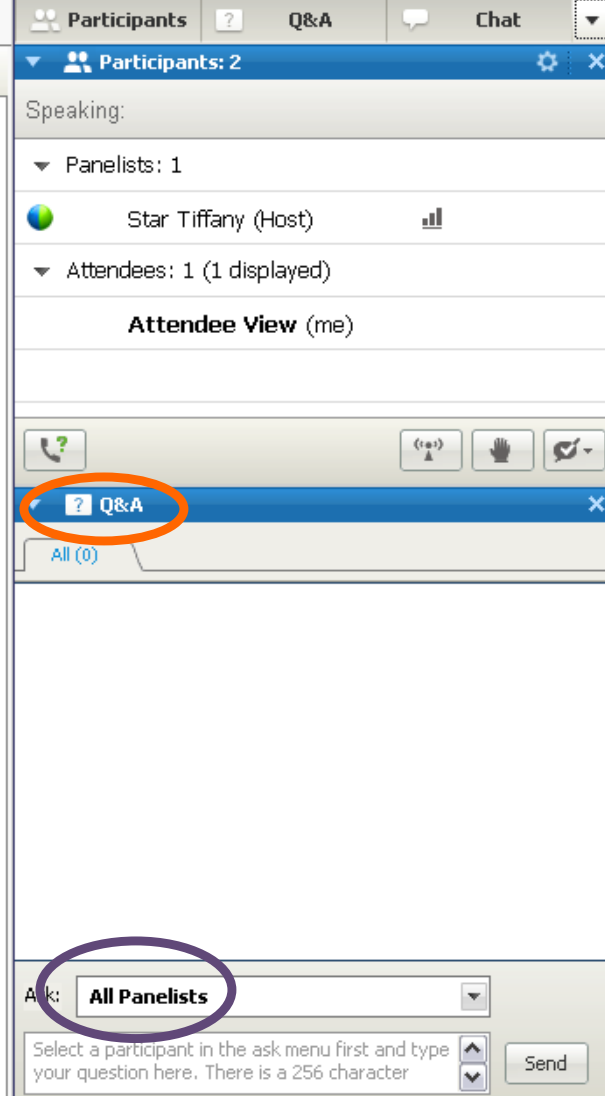
Complete the Post-Web Forum online evaluation. **We need your feedback!**

The **Recording** and **Slides** will be available at www.Dialogue4Health.org

Q&A Feature

Please submit questions via the
Q&A Feature

Please send your questions to
All Panelists



Participants ? Q&A Chat

Participants: 2

Speaking:

Panelists: 1

Star Tiffany (Host)

Attendees: 1 (1 displayed)

Attendee View (me)

Q&A

All (0)

Ask: All Panelists

Select a participant in the ask menu first and type your question here. There is a 256 character

Send

POLL #1

Are you attending this Web Forum:

- a. Individually
- b. In a group of 2-5 people
- c. In a group of 6-10 people
- d. In a group of more than 10 people

Polling Feature

Please

1. Choose your **answer**, then
2. Click **Submit**



Partic... Chat Q&A Polling

Participants: 2

Name	Tools
Star Tiffany (Host)	
Attendees: 1 (1 displayed)	

Attendee View

Request Mute

Q&A

All (0)

Ask: All Panelists

Select a participant in the ask menu first and type your question here. There is a 256 character limit. Send

Time elapsed: 0:20 Time limit: 1:30

Poll Questions:

1. I am attending this Web Forum:

- a. Individually
- b. In a group of 2-5
- c. In a group of 6-10
- d. In a group of more than 10 people

Submit

Your answer may be recorded. Submit



Matthew Marsom

Vice President
Public Health Institute

As Vice President for Public Health Policy and Advocacy for the Public Health Institute (PHI), Matthew is responsible for designing and implementing PHI strategy for monitoring and influencing public policy, legislation and regulations affecting PHI projects and public health policy relevant to PHI interests.

Website: www.phi.org

Thank you to our cosponsors:

American Public Health Association
PolicyLink
Prevention Institute
Public Health Institute
Trust for America's Health

- **The American Public Health Association** is the oldest and most diverse organization of public health professionals in the world and has been working to improve public health since 1872.
- **PolicyLink** is a national research and action institute advancing economic and social equity by Lifting Up What Works. ®
- **Prevention Institute** was founded in 1997 to serve as a focal point for primary prevention practice—promoting policies, organizational practices, and collaborative efforts that improve health, equity and quality of life.
- **The Public Health Institute** (PHI) is an independent, nonprofit organization dedicated to promoting health, well-being and quality of life for people throughout California, across the nation and around the world.
- **Trust for America's Health** (TFAH) is a non-profit, non-partisan organization dedicated to saving lives by protecting the health of every community and working to make disease prevention a national priority.

Take part in this conversation on the
Dialogue4Health social network:

<http://dialogue4health.ning.com/>



Becky Salay

Director of Government Relations
Trust for America's Health

Becky Salay is the Director of Government Relations at TFAH, ensuring the group's public policy agenda is implemented at all levels of government: federal, state and local. Previously, she was the Associate Director of Government Affairs at the Center for American Progress, where she worked on health reform, education, work/life balance, LGBT and poverty issues. Ms. Salay began her career on Capitol Hill, where she served for nearly 10 years on the staff of Congresswoman Rosa DeLauro (D-CT).

Website: <http://healthyamericans.org>



Craig Martinez, DrPH, MPH

Health Policy Advisor
Committee on Health, Education, Labor & Pensions
Majority Health Policy Office

Craig Martinez is a Health Policy Advisor in the Majority Health Policy Office of the Senate Health, Education, Labor, and Pensions (HELP) Committee. His legislative portfolio includes issues relating to public health, prevention, health disparities, mental health, HIV/AIDS, and public health preparedness. Dr. Martinez holds a Doctorate in Public Health degree and Master of Public Health degree from the Johns Hopkins Bloomberg School of Public Health and a Bachelor of Science degree from Stanford University.

Website: <http://www.help.senate.gov>



Sana Chehimi

Program Director
Prevention Institute

Sana Chehimi oversees projects related to healthy eating and active living, community prevention through health reform and communications. Her work focuses on developing tools and strategies to promote healthier, more equitable environments. Sana co-edited *Prevention Is Primary: Strategies for Community Wellbeing*, one of the first academic texts on primary prevention; the Second Edition was published in August 2010.

Website: www.preventioninstitute.org

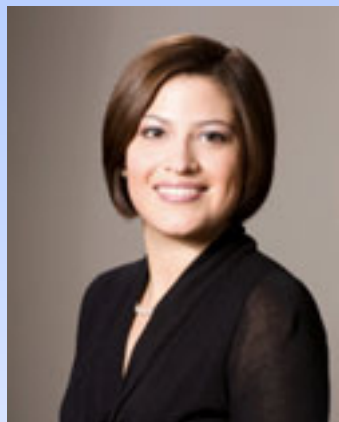


Lucy Melcher

Government Relations Manager
American Public Health Association

Lucy Melcher is the Government Relations Manager at the American Public Health Association (APHA) where she works to advance the organization's public health priorities at the federal level. She also works on APHA's grassroots advocacy program, developing resources and tools for public health advocates across the country. Prior to joining APHA, Lucy worked on health care and education issues for Senator Jeff Merkley (D-OR). Lucy holds a Masters of Public Policy from Duke University and a Bachelors of Arts in political science from American University.

Website: www.apha.org



Amanda M. Navarro

Associate Director
PolicyLink

Amanda M. Navarro is an Associate Director at PolicyLink in New York, NY where she currently oversees efforts of the national Convergence Partnership—a collaboration of funders aimed at achieving healthy people living in health places through environmental and policy change. She provides research, technical assistance, and training on collaborative, multi-field strategies to improve community environments particularly in low income communities and communities of color.

Website: www.policylink.org

Web Forum Agenda

- Discuss the latest national developments from Capitol Hill and Washington, DC.
- Review potential threats to the Prevention Fund and resources for public health.
- Provide update on advocacy efforts in support of the Prevention and Public Health Fund.
- Call to action to support the Prevention Fund and resources for community prevention.
- Open Q&A and discussion.

POLL #2

Please select any activities you have engaged to support the Prevention and Public Health Fund:

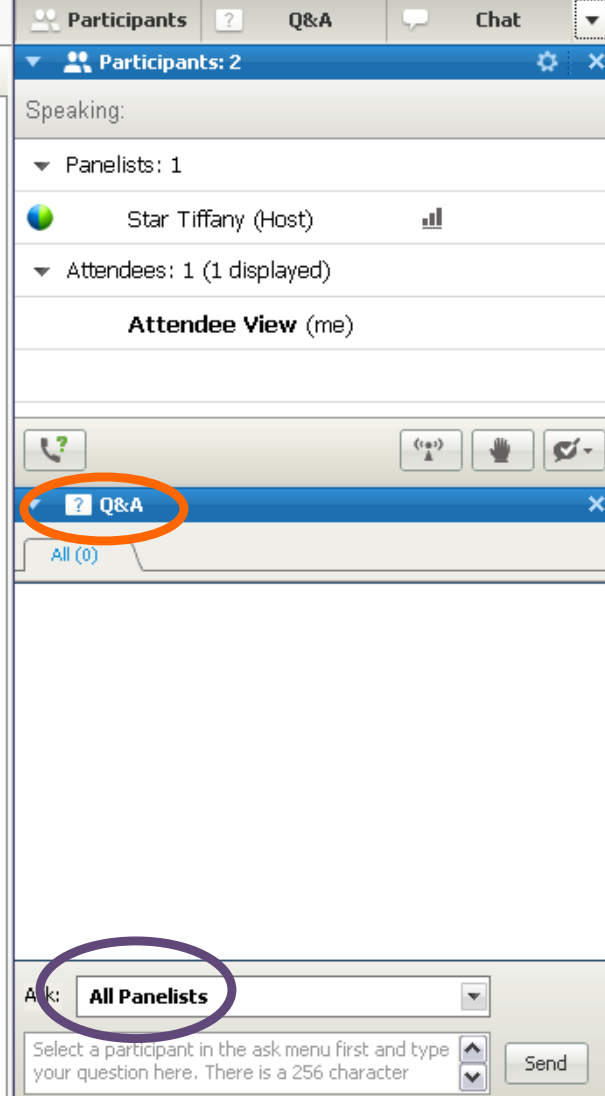
(Multiple choice, single answer)

- a. Sent a letter to my Senators and Representative
- b. Encouraged my colleagues/friends to send a letter
- c. Called or met with my Senators and Representative
- d. All of the above
- e. Other (please share in Q&A)
- f. I did not engage in actions to support the Fund

Q&A Feature

Please submit questions via the
Q&A Feature

Please send your questions to
All Panelists



Participants ? Q&A Chat

Participants: 2

Speaking:

Panelists: 1

Star Tiffany (Host)

Attendees: 1 (1 displayed)

Attendee View (me)

Q&A

All (0)

Ask: All Panelists

Select a participant in the ask menu first and type your question here. There is a 256 character

Send

POLL #3

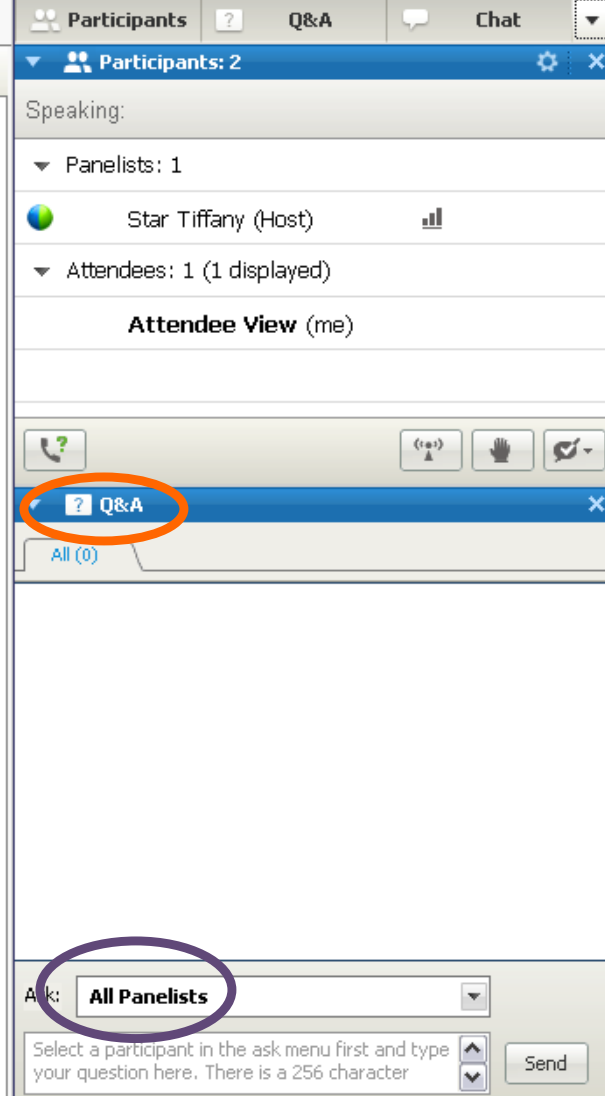
Specific to the Prevention and Public Health Fund, what additional information would be helpful to you?
(Multiple choice, single answer)

- a. Fact Sheets
- b. Talking Points
- c. List of Supporting Organizations
- d. All of the above
- e. Other (please share in Q&A)

Q&A Feature

Please submit questions via the
Q&A Feature

Please send your questions to
All Panelists



Participants ? Q&A Chat

Participants: 2

Speaking:

Panelists: 1

Star Tiffany (Host)

Attendees: 1 (1 displayed)

Attendee View (me)

Q&A

All (0)

Ask: All Panelists

Select a participant in the ask menu first and type your question here. There is a 256 character

Send

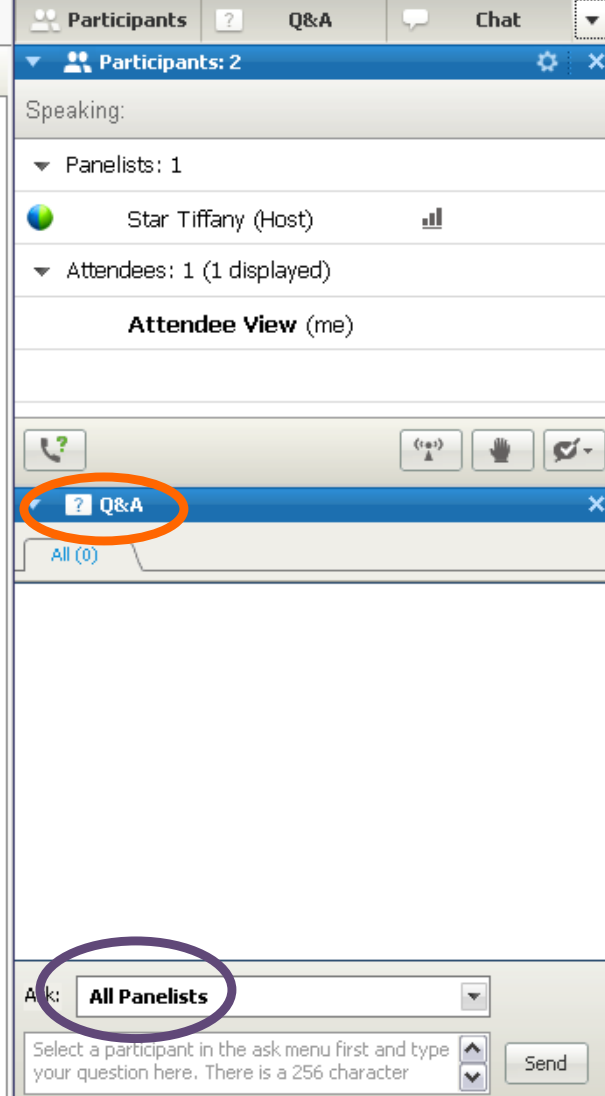
Take part in this conversation on the
Dialogue4Health social network:

<http://dialogue4health.ning.com/>

Q&A Feature

Please submit questions via the
Q&A Feature

Please send your questions to
All Panelists



Participants ? Q&A Chat

Participants: 2

Speaking:

Panelists: 1

Star Tiffany (Host)

Attendees: 1 (1 displayed)

Attendee View (me)

Q&A

All (0)

Ask: All Panelists

Select a participant in the ask menu first and type your question here. There is a 256 character

Send

Learn more about health reform advocacy at:

<http://dialogue4health.org/hcr/index.html>

<http://bit.ly/healthreformadvocacy>

<http://action.apha.org/site/PageNavigator/Advocacy>

<http://healthyamericans.org/health-reform/>

<http://bit.ly/protectprevention>

Take part in this conversation on the
Dialogue4Health social network:

<http://dialogue4health.ning.com/>

Thank you to our cosponsors:

American Public Health Association
PolicyLink
Prevention Institute
Public Health Institute
Trust for America's Health